

# Overton News & Views

ON&V September 2011

Publication Date:  
Thursday 18 August 2011

Information and Comment on Village Activities. ON&V is published monthly by Overton Parish Council and is distributed by volunteers to every property in Overton, Ashe, Laverstoke & Freefolk. See also website [www.OvertonVillage.com](http://www.OvertonVillage.com)

## The Overton Parish Council Information Office...

... is in St Mary's Hall (the right-hand set of double green doors) and is open to the public with Parish Clerk Laura Harley there from 9am - 12noon every Wednesday and Thursday  
☎ 771919 ✉ [opc@overtonvillage.com](mailto:opc@overtonvillage.com)  
(Note: Laura's postal address is Oak Tree Lodge, Roundwood, Micheldever, Winchester, Hampshire SO21 3BA)  
\* See also the foot of page 4 for contact details of Parish Councillors \*

## Parish Councils' Diary

### \*Overton Parish Council Monthly Meeting:

**Wednesday 14 September:** 7.30pm in the Community Centre,  
(Note: Public Time is from 7pm - 7.30pm)

### \*Overton Parish Council Planning Meeting:

**Tuesday 27 September:** 7.30pm in the Community Centre.  
Agendas and planning applications are displayed on the Parish Noticeboard. The public is welcome to attend and may discuss any planning matters prior to the start of each meeting.

### \*Laverstoke & Freefolk Parish Council Meeting:

**Tuesday 13 September:** 8.15pm at Portals Sports & Social Club  
(Note: Public Time is from 8pm - 8.15pm). All are welcome.  
An update about the Club is on the Agenda.

## Laverstoke & Freefolk Parish Council - a polite request

It has come to the Parish Council's attention that cars are being parked very near the junction of Laverstoke Lane and the B3400 - which causes problems for people turning *into* Laverstoke Lane.

**\*Please ensure the junction is kept clear at all times\***

## Overton Parish Council (OPC) Notes

From Laura Harley - Overton Parish Clerk

### 1) Planning Applications *approved* by B&DBC

**BDB/74098** – erection of garage with pitched roof and front porch following demolition of existing garage, porch and flue at Threeways, Sapley Lane

**BDB/74233** – erection of side conservatory and alterations to existing roof forming new gable at 20 Copse Road

**BDB/74268** – erection of machinery & storage building with office/staffroom & mezzanine floor on land, Polhampton Farm

**BDB/74208** – erection of two storey side extension, single storey rear extension, front porch and insertion of dormer windows at Wyvern Cottage, London Road

**BDB/73958** – application for a Certificate of Lawfulness for the dwelling known as The Flat, Copse Farm, Burley Lane

### 2) Planning Applications *refused* by B&DBC

**BDB/74207** – T1 - Oak - crown reduce by 15% and thin at 1 The Orchard

**BDB/74253** – creation of first floor living accommodation involving alterations to the roof and installation of roof lights to side elevation. Erection of part two-storey, part single-storey rear extension and construction of bay windows and porch to front elevation of 5 Alexander Road

### 3) Parish Noticeboard

Please remember to leave notices for this board (located on the side of the public toilets in Winchester Street) at the Pharmacy, where they will be picked up on a weekly basis.

Please make sure that you give plenty of advance warning to advertise your event and that the notices are set out in **A4 portrait layout**.

### 4) Berrydown Project - request for funding

For some years the Overton Recreation Centre (ORC) has been raising funds to build a new sports pavilion at Berrydown for cricket, football and other recreational activity especially aimed at youth. Funds of **£398,000** have now been raised or committed towards the **£450,000** project - leaving a **£52,000** shortfall. **Overton Parish Council is considering funding this shortfall by taking out a loan, to be repaid over 10 years. This would result in an increase to the precept of £5,842 p.a. - which equates to a £3.21 annual rise for a Band D property.**

One reason for considering this funding is that, in many villages, it is the parish council which provides the sporting facilities that have been provided here in Overton by the ORC for 44 years. In addition, Overton Parish Council does not want to lose the "window of opportunity" to complete this project, while other funding has been made available.

Before taking this matter further, Overton Parish Council is interested in the opinions of you - the parishioners - as to whether or not this expenditure should be undertaken.

**Please let Laura Harley, Parish Clerk, know as soon as possible (preferably in writing) whether or not you support this proposal.**

### 5) Local Development Framework

Unfortunately, the July meetings of the Planning Infrastructure and Overview Scrutiny Committee (as detailed in June **ON&V**) did not take place. Housing numbers and sites will now be discussed on Tuesday 20 September (the Council expects that the meeting will need to continue on Wednesday 21 and possibly Thursday 22) Members of the public can attend & speak. Any more information received about future meetings will be advertised on the Parish Noticeboard, in future **ON&V** and at [www.basingstoke.gov.uk](http://www.basingstoke.gov.uk)

### 6) SHLAA - Strategic Housing Land Availability Assessment

The primary purpose of the SHLAA is to:

- ♦ identify sites with the potential for housing;
- ♦ assess how many homes they could provide; and
- ♦ assess when they could be developed.

The assessment is an important evidence source to inform decision-making on future housing development, but does not determine whether or not a site will be allocated for housing development. It includes a high level strategic overview assessment of the deliverability/developability of each identified site (in terms of its suitability, availability and achievability).

In-depth analysis of strategic sites will come later when they are looked at as part of the process of deciding which sites should be proposed for development in the Local Development Framework.

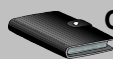
At present there are five sites in Overton included within the current SHLAA document (which is updated annually):-

- ♦ Land to the west of Kingsclere Road (150 dwellings)
- ♦ Overton Hill (120 dwellings) ♦ Two Gate Lane (150 dwellings)
- ♦ Pond Close (200 dwellings) and ♦ Land north of Court Farm (80 dwellings) - a total of 700 possible dwelling sites in all.

### 7) Well done Chris!

Congratulations are in order for our **ON&V** Editor, Chris Penney.

As part of his other Overton role as Trustee & Secretary of St Luke's Hall, he was project manager on behalf of the Trustees for the hall's major refurbishment, successfully completed last November. Chris's work over the last few years was recognised by **B&DBC** at its **Celebrating Volunteers Evening** on 26 July, when Cllr David Leeks, The Worshipful the Mayor of Basingstoke and Deane, presented him with a Special Achievement Award.



## Overton Village Diary for September 2011

See also [www.OvertonVillage.com](http://www.OvertonVillage.com)

\*\*\* Reminder.... ON&V publication dates changed to *mid-month* from this edition on. Please see below and at the foot of page 4 for copy deadline & publication dates for remainder of 2011 \*\*\*

**Every Tuesday 2.30pm to 4.30pm**

\*The Rural Mobile Police Office is in Overton Community Centre forecourt with Station Enquiry Officer Stewart Packham

**Every Tuesday and Thursday Evening**

\*The ChillZone, on Overton High Street - in the village centre - is open to all youth School Years 7+ (ie ages 11-18)

**Every Thursday from 10am to 12noon**

\*Overton's Home Producers' Market in St Mary's Hall

**Saturday 3 September**

\*Overton Harriers: 21<sup>st</sup> 5-mile Road Race (2 laps) and 2½ mile Fun Run (1 lap): 3pm at Overton Recreation Centre - preceded by the ever-popular **Children's Race** at 2.15pm. A programme, including an entry form and course map, will be circulated to every household in Overton and Laverstoke approx. a week earlier. Further details available **now** from [www.overtonharriers.org.uk](http://www.overtonharriers.org.uk) or John Thomas 0770348

\*\*\* **Footnote from PC3909 Richard Baldwin:** *The race is run entirely on public roads around the village - and, for the first time, in a clockwise direction. The race will cause minor disruption to the flow of traffic - in particular on the B3400 at the Traffic Light Junction as well as in Southington.*

*If you are driving around or through the village between 3pm and 4pm, please drive carefully and expect delays*

**Monday 5 September**

\*PC Baldwin's Police Surgery: 12noon - 2pm in the Parish Council Information Office, St Mary's Hall

\*Overton Choral Society: 7.45pm in St Mary's Hall, when the programme for 2011/2012 will be discussed and sung

**Tuesday 6 September**

\*Overton WI ([www.hampshirewi.org.uk](http://www.hampshirewi.org.uk)) monthly meeting: 7.15pm in the Community Centre. A talk and demonstration of **Tai Chi** by Terry Taylor. Refreshments will be available and visitors are welcome. For information please contact Beryl Beckett 0771210 or [berylbeckett@aol.com](mailto:berylbeckett@aol.com)

**Wednesday 7 September**

\*Overton Folk Club meets on the first Wednesday of every month from 8pm in the Community Centre. The autumn season starts tonight with a singaround. It's not all "finger in the ear" music - we get people performing a wide variety of acoustic music, so why not come along and listen, or even sing us a song! Ring Tom Hanley 0770384 for details

**Friday 9 September**

\*Overton Photographic Club: 7.30pm ORC Bridge Street Pavilion. This 1<sup>st</sup> meeting of the new season will be a fun competition, with prints/digital entries that have not been digitally altered in any way. Visitors & new members are always welcome. For more information contact Virginia Langer 0770848 or [www.overtonphotographicclub.org.uk](http://www.overtonphotographicclub.org.uk)

*PS If you receive this ON&V in time, please visit our summer exhibition at the Micheldever Station Fête on Bank Holiday Monday 29 August and look at some of our members' photos*

**Saturday 10 September**

\*Kingfisher Day Centre Mega-Jumble-Sale: 12noon - 4pm at our Day Centre, Testbourne School grounds, Whitchurch

**Sunday 11 September**

\*Parish Walks: 2pm on the second Sunday of each month, starting from the Community Centre. 4 - 5 miles to discover all our **Parish Rights of Way**. Everyone welcome. For information contact Brian Wheeler 0771895 or Adrian Smith 0770053

**Tuesday 13 September**

\*Overton Community Association AGM: 7.30pm at Overton Community Centre, including an updated constitution to be presented for the approval of members. All Overton residents aged 18 and over are eligible to become members for a joining fee of only £1 per year.

**Friday 16 September**

\*Overton Biodiversity Society (OBS) Bat and Moth Walk: 7.30 pm at Overton Community Centre. Join us for a brief talk on moths and bats, followed by a walk around the village - visiting a moth trap and using bat detectors to locate and identify bats. Hot drinks and cakes to finish off with! £2.00 for OBS members, £2.50 non-members. For more details contact Ken MacKenzie 0771121

**Wednesday 21 September**

\*Overton & District U3A ([www.overtonu3a.org.uk](http://www.overtonu3a.org.uk)) monthly meeting: 10am in St Mary's Hall. A talk by Chris Surtell on **The History of Portals**. Refreshments will be available and visitors are welcome for a charge of £3.00 (refundable if they then decide to join). For membership information please contact Jan Baker 0773371 or [jan.baker2007@btinternet.com](mailto:jan.baker2007@btinternet.com)

**Thursday 22 September**

\*Publication Date of OCTOBER ON&V: see also foot of page 4

**Friday 23 September**

\*Well Baby Clinic: 9.30am - 11am in the Community Centre

**Friday 30 September**

\*12noon is the Final Deadline for contributions to the NOVEMBER edition of ON&V - see also foot of page 4

**Overton Biodiversity's Society Wild-life Photo Competition**

The subject: any animal, bird, insect, reptile or tree in its natural habitat within ten miles of Overton. No elephants, hippos or pets! Classes for all ages - and you can submit up to 3 photos at a fee of £1.00 per photo. Kindly sponsored by Overton Co-op. **Get Snapping!** A combined application form & mounting sheet is available from the Overton Fireplace Shop. Closing date 18 February 2012. Ken Towell 0770965

**Testbourne News: Living up to Olympic Values**

The Olympic and Paralympic values of Excellence, Respect, Determination, Equality, Courage, Inspiration & Friendship provided a very fitting foundation for a special Olympic Legacy Day on 15 July. The school has signed up to the **Olympic Get Set Network** - in preparation for London 2012 - and marked the beginning of our involvement with this Olympic-themed day, which proved a great hit with our students. We even had our own Opening Ceremony - with Holly Croxford, an ex-student, providing a super start: wearing her GB athletics vest, she delivered the inspirational message that if you work hard and go after your dreams you really can make them come true.

Off-timetable and out of uniform, the students worked with real commitment throughout the day in mixed-age groups to rise to a wide variety of challenges created by each department, aiming to "be the best you can be".

From Hilary Jackson, Headteacher

### Letters to The Editor

**Bombay Spirits Company:** As many of you will know, the company has completed the purchase of historic Laverstoke Mill with a view to restoring and regenerating the site as a permanent home for Bombay Sapphire® gin. We identified this two hectare brown-field site due to its unique beauty, history & suitability for re-development.

We aim to restore Laverstoke Mill to its former glory by creating a world-class centre to the highest environmental and design standards to celebrate not only Bombay Sapphire but also the Mill's distinctive history. While we are only starting the initial pre-planning application phase, we have been thrilled by the initial response and support received from local residents.

I have lived in Overton for ten years, so am still a relative new-comer. In my role, responsible for Bombay Sapphire gin globally, I would be delighted to bring our elegant brand to neighbouring Laverstoke. I am very excited about, and proud of, the possibility that the global home for Bombay Sapphire gin could be Laverstoke Mill. I believe our proposals will be good for local people and businesses. In the short-term, hundreds of jobs will be created in the 18-month construction period, and the site will go on to create permanent employment for local people once it is operational. Furthermore, visitors to the Mill are likely to contribute to the local economy and support local shops and businesses. *From John Burke, Global Category Director, Gin.* For further information please visit the website at [www.laverstokemill.co.uk](http://www.laverstokemill.co.uk) or email us at [info@laverstokemill.co.uk](mailto:info@laverstokemill.co.uk)

**Kingfisher Day Centre** would like to thank everyone for the enormous amount of very saleable goodies brought in and collected for our sale. We were so lucky to be offered an unexpected cancellation at the Charity Shop in Whitchurch for 2 weeks in mid-June - and, thanks to you all, to Tracey and her magnificent team of volunteers and to donations, we made a fantastic profit of **£1637**.

We really are so grateful to everyone who supported this venture as it will help towards our move to Laverstoke later in the year.  
**From Julia Cobb**

**Sparkling Rugby Tournament:** Well done to pupils from the Overton Primary School who took part in this year's tournament - they are a credit to both their school and Village! In May, two teams from years 5 & 6 took to the field, but were drawn in difficult pools which included the eventual winners - Oakley. The boys and girls played really well, just missing out on progressing through to the quarter-finals and were presented with a Fairplay award for their conduct on the pitch. In June it was the turn of years 3 & 4 who qualified out of the pool matches with an unbeaten record of played six - won six. The team progressed to the semi-final stage before being narrowly beaten by a team from Ashford Hill.

**From Richard Baldwin**

**Church-run toddler groups in the village:** I would like to thank all those people who volunteer at these - *Tea & Tots, Seekers, Wednesday Welcome* and *Friday Friends* - for their kindness and their time. They have been a constant source of friendship and support since our daughter was two weeks old: she begins school this month.

**From Mrs Susan Clifford, 54 Winchester Street Overton**

**Colin Parker:** It was with great sadness that we heard from Elvina that Colin died on Thursday 21 July, at the age of 69. Before retiring and moving to Sidmouth early this year, Colin had served the Overton community both as Trustee and Chairman of *The Friends of Oakley & Overton Surgery* and as General Manager of *Overton Recreation Centre*. A very professional gentleman, Colin had earned the respect and lasting friendship of all his many colleagues in Overton, some 20 of whom travelled to Exeter Crematorium on Tuesday 2 August, to join and support Elvina & the family. **From Brian Wheeler**

**Chinese Lanterns:** These no longer have wire in them which was a serious threat to livestock when chopped by a forage harvester or combine and included in feed. After the spectacular firework display at Lordsfield, my farm was bombarded - and one still-smouldering lantern landed on a car at Osier Cottage, Quidhampton. We collected 13 soggy ones from our river & about 30 from the field where my sheep were at the time. Fortunately no livestock choked to death. The remainder are presumably in my crops which, at that stage, were fairly green and I doubt they will damage the combine harvester. If you would like to know more about the campaign to ban Chinese Lanterns, please see the **NFU** website [www.nfonline.com](http://www.nfonline.com) **From Richard Gibbins**

**Naomi House and jacksplace:** Another year, another very generous response, both from local businesses (with generous donations of wine bottles to support our Water or Wine stall at the Scarecrow Festival) and from Overton's residents and visitors (who helped us raise a highly respectable **£970** over a somewhat wet & windy weekend). We are indebted to you all for your ongoing support. And if you would like to see how your money is spent, then join us at the hospices in Sutton Scotney on Saturday 10 September, when we have our annual fete & open day.

**More details on the website** [www.naomihouse.org.uk](http://www.naomihouse.org.uk), or from the fundraising office on **01962 843513**

**From Pat Bain & Debbie Lister, Basingstoke Fundraising Group**

### Digital Television Switchover in 2012

Hannington mast, which serves the Overton area, switches from the existing analogue TV signal to a stronger digital system. BBC2 analogue will be switched off on 8 February and the remaining analogue channels on 22 February.

If you have Freeview, BT Vision or Top-Up TV, your digital box or TV will need to be re-tuned. If you have Sky TV, Freesat from Sky, Freesat, Virgin Media or Wightcable no action is required.

If you have only an analogue TV, your television will need to be converted or you will no longer receive any channels after switchover. Almost any television can be converted (even black and white) - with a digital box that either connects with a SCART cable or built-in RF modulator.

The Switchover Help Scheme will provide older and disabled people with everything they need to switch to digital TV (including easy-to-use equipment, installation and a 12 month aftercare service) for an inclusive cost of £40.00. To take advantage of this scheme you will need to be over 75, or have lived in a care home for more than six months, or get certain disability benefits, or be registered blind or partially sighted.

**For more information, visit** [www.helpscheme.co.uk](http://www.helpscheme.co.uk) **If you have any questions, please phone** **08456 505050** or visit [www.digitaluk.co.uk](http://www.digitaluk.co.uk)

**From Laura Harley**

**Transport and Lighting News**

From Brian Langer - OPC Transport & Lighting Representative

**South West Trains Stakeholders' meeting:** I will attend this meeting on behalf of OPC, on Thursday 29 September. Please let me know of any issues you wish me to raise - ☎770848

**Atlantic Coast Express:** A locomotive-hauled train with this historic title will pass through Overton en route to Newquay on Sunday 4 Sept, returning via Overton on Tuesday 6 Sept. (full details from the website ✉[www.steamdreams.co.uk](http://www.steamdreams.co.uk))

(It was impressive to see **70000 Britannia** take on water at Overton on 28 July en route from Salisbury to Canterbury.)

**Transport funding cutbacks:** (See also May & July ON&V) Although full details have yet to be published, it seems (from HCC information) that Overton may have been fortunate in retaining many of its subsidised bus services

**Services 76/86 Mondays to Saturdays:** Town services in Basingstoke are expected to finish around 9.30pm and evening services from Winchester to Whitchurch are to be discontinued, but there is no mention of the mid and late evening buses to and from Overton being cut. If that is so, we will continue our efforts to have the last bus rescheduled so that its departure from Basingstoke comes within the validity of the elderly persons' bus pass.

**Service 76 Sundays:** HCC advises that, from late autumn, this service will include Oakley in its route and will also be extended to Andover, running on an "even interval basis", but the frequency of this is not stated.

**Village shuttle service 74:** HCC has asked OPC to comment on a revised draft timetable with the possibility of accessing Kercher's Field and Mede Close under consideration. It is assumed that this means the service will continue in some form. However, to avoid causing congestion near the Pharmacy, the bus is expected to be re-routed from Pond Close via Woodlands - so that it uses the St Mary's Hall bus stop before doing the station loop.

**Late News ....**

**Closure of Newbury Road Bridge, Whitchurch** (see page 3 of July/August ON&V). Network Rail now advises that, due to wildlife considerations, this bridge will be closed between January and March 2012 - rather than in autumn 2011. (Preparatory work on site will commence this autumn, but it will not involve closure of the bridge at this stage.)

**Overton Police Update**

From PC3909 Richard Baldwin - Parish Beat Officer

Mobile ☎ 07542 524874 Police Control Room ☎ 0845 045 45 45

✉ [richard.baldwin@hampshire.pnn.police.uk](mailto:richard.baldwin@hampshire.pnn.police.uk)

Overton's Police Community Support Officer is Sabrina Smith

✉ [sabrina.smith@hampshire.pnn.police.uk](mailto:sabrina.smith@hampshire.pnn.police.uk)

Remember - in the event of an Emergency ☎ 999

(For all non-emergency calls you can now ☎ 101)

(Should you wish to speak to the Police anonymously, you can call the Crimestoppers charity ☎ 0800 555 111)

The Overton Beat Area extends to Polhampton Lodge (B3051) to the North, Ashe to the East, Freefolk to the West & Coxford Down (A303) to the South

July saw the brilliant 2<sup>nd</sup> Overton Scarecrow Festival, which showcased the fantastic community spirit of the village.

On a sour note, however, we received quite a few reports of scarecrow displays that were either stolen or damaged - really disappointing after all the effort put in by everyone.

**If anyone has any information that could help identify those responsible, I would greatly appreciate your help.**

**Dwelling burglary in the village:** On this occasion the thieves targeted a house that was not lived in. While house break-ins are extremely rare in the village, we would urge all house holders to review their home security. If you would like any practical advice in securing your home, please contact us to arrange a home visit from your local beat team.

**Spooky lights reported in the Overton & Laverstoke area....**

.... but it turned out to be a rather disappointing conclusion! Two powerful lights from the Micheldever area were programmed to move around, illuminating the overhead clouds and giving the illusion of lights darting around the sky .....so no need for the services of Mulder and Scully (X-Files).

**Tackling anti-social behaviour & criminal damage:** July was a disappointing month as we had quite a lot of bad behaviour in the village. We had report of a window being broken by a football at the Community Centre and also hanging baskets and scarecrows being either damaged or stolen.

**If you witness any bad behaviour in your area please contact the Police by phoning ☎101**

**Road safety across the Beat Area:** Work continues with the Roads Policing Unit (Traffic Dept) from Whitchurch in a bid to reduce road casualties and make sure all road users keep to the applied speed limits. A Drink/Drive Campaign is still being conducted across the County during the summer months and July saw two drivers being charged locally with drink-driving.

**ON&V - Copy Dates & Publication Dates for the remainder of 2011**

Month of issue shown on cover	Final Deadline for receipt of contributions & Village Diary Dates	Publication Date
October 2011	*** 12.00noon on 31 August (now always the last day of each month)	Thursday 22 September
November 2011	12.00noon on 30 September (always the last day of each month)	Thursday 20 October
December 2011	12.00noon on 31 October (always the last day of each month)	Thursday 17 November
NEW! January 2012	12.00noon on 30 November (always the last day of each month)	Thursday 15 December

\*\*\* Please send all contributions for ON&V as an Email with WORD attachment - including dates/events for the Village Diary section - to the Editor, Chris Penney, at ✉ [OvertonNewsViews@aol.com](mailto:OvertonNewsViews@aol.com) (or send as typed copy to 7 Batten's Avenue, Overton RG25 3NL)

Please Note: Articles or Letters submitted anonymously will not be considered for publication, although names and/or addresses may be withheld at the discretion of The Editor, who reserves the right not to print contributed articles - without giving a reason - and whose decision is final.

Additional printed copies of each current edition of ON&V are available from The Co-op, The Library, Parnell Jordy & Harvey and The Doctors' Surgery.

You can also view the current edition - and many previous editions - online at the Overton Village website ✉ [www.Overton.Village.com](http://www.Overton.Village.com)

Overton News & Views is published monthly by Overton Parish Council & is printed by Crucible Ltd, 6B High Street, Overton RG25 3HA ☎ 773377 ✉ [roger@crucibleltd.co.uk](mailto:roger@crucibleltd.co.uk)

**For problems or comments about Overton Parish Council matters, please contact these Parish Councillors:**

Parish Council Chairman	Tom Ridler (also Highways representative) ☎ 773108	✉ <a href="mailto:tom.ridler@which.net">tom.ridler@which.net</a>
Vice-Chairman	Lucy Sloane Williams	☎ 770607 ✉ <a href="mailto:lucysloanewilliams@gmail.com">lucysloanewilliams@gmail.com</a>
Mark Attwell	☎ 770472	Peter Baker
Paul Crawte	☎ 771067	☎ 770007
Tony Leach	☎ 772020 (also Planning Committee Chairman)	Brian Langer
Jacky Lessware	☎ 773043	☎ 770848 Public Transport and Street Lighting Representative
Adam Trickett	☎ 772133	Paula Baker
		☎ 771219 (also Borough Councillor)
		Ian Tilbury
		☎ 771429 (also Borough Councillor) Byways & Rights of Way Representative
		Vacancy